

**KD-Validated Anti-Calpastatin Mouse Monoclonal Antibody**  
**Mouse monoclonal antibody**  
**Catalog # AGI1940****Specification**

---

**KD-Validated Anti-Calpastatin Mouse Monoclonal Antibody - Product Information**

Application	WB
Primary Accession	<a href="#">P20810</a>
Reactivity	Human
Clonality	Monoclonal
Isotype	Mouse IgG1
Calculated MW	Predicted, 77 kDa, observed, 120 kDa KDa
Gene Name	CAST
Aliases	CAST; Calpastatin; Sperm BS-17 Component; Calpain Inhibitor; MIR583HG; MIR583 Host Gene; NONHSAG041072.2; NONHSAG041079.2; NONHSAG041069.2; NONHSAG041075.2; NONHSAG041074.2; HSALNG0043632; HSALNG0148668; HSALNG0043636; HSALNG0043640; HSALNG0037602; HSALNG0043637; MIR583 Host; Lnc-CAST-10; Lnc-CAST-3; BS-17; PLACK
Immunogen	Recombinant protein of human CAST

**KD-Validated Anti-Calpastatin Mouse Monoclonal Antibody - Additional Information**

Gene ID	831
<b>Other Names</b>	
Calpastatin, Calpain inhibitor, Sperm BS-17 component, CAST	

**KD-Validated Anti-Calpastatin Mouse Monoclonal Antibody - Protein Information****Name** CAST**Function**

Specific inhibition of calpain (calcium-dependent cysteine protease). Plays a key role in postmortem tenderization of meat and have been proposed to be involved in muscle protein degradation in living tissue.

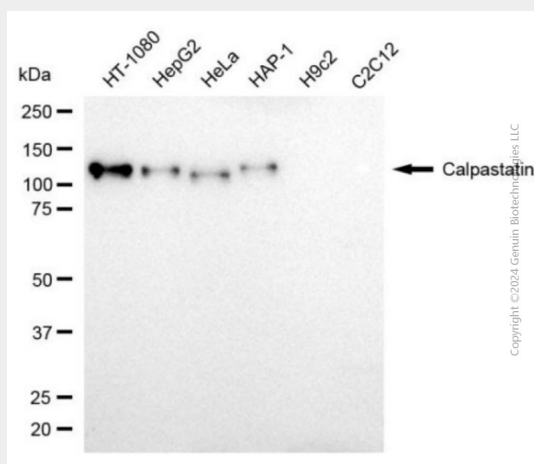
**KD-Validated Anti-Calpastatin Mouse Monoclonal Antibody - Protocols**

Provided below are standard protocols that you may find useful for product applications.

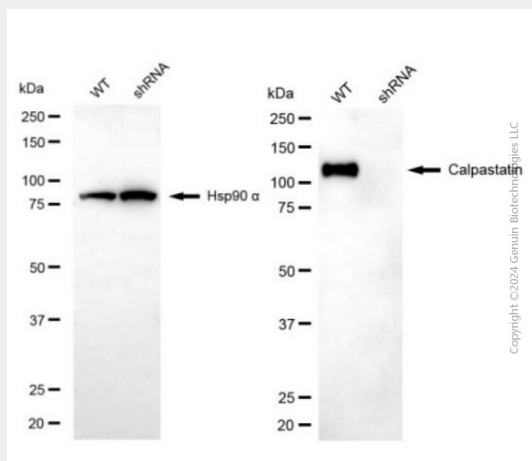
- [Western Blot](#)
- [Blocking Peptides](#)

- [Dot Blot](#)
- [Immunohistochemistry](#)
- [Immunofluorescence](#)
- [Immunoprecipitation](#)
- [Flow Cytometry](#)
- [Cell Culture](#)

## KD-Validated Anti-Calpastatin Mouse Monoclonal Antibody - Images



Western blotting analysis using anti-calpastatin antibody (Cat#AGI1940). Total cell lysates (30 µg) from various cell lines were loaded and separated by SDS-PAGE. The blot was incubated with anti-calpastatin antibody (Cat#AGI1940, 1:5,000) and HRP-conjugated goat anti-mouse secondary antibody respectively.



Western blotting analysis using anti-calpastatin antibody (Cat#AGI1940). Calpastatin expression in wild type (WT) and calpastatin (CAST) shRNA knockdown (KD) HeLa cells with 20 µg of total cell lysates. Hsp90 α serves as a loading control. The blot was incubated with anti-calpastatin antibody (Cat#AGI1940, 1:5,000) and HRP-conjugated goat anti-mouse secondary antibody respectively.